



LASER BLADE HORIZONTAL GEARBOX SERIES  
LED TRACK SPOT LIGHT

# LASER BLADE HORIZONTAL GEARBOX SERIES



## Product features

LASER Spot projector is a 4 different family series but sharing the same optic systems and accessories which made this 4 series to have the same light effects technology, but in different size and gearbox re-arrangement. Thanks to ISS and IO5 system which made it possible to interchange LED and different beam angle within a few second. With all these special features, LASER track spot possible to be used in all kind of applications.

## Range of Application

Commercial  
Architectural  
Museum / Art gallery

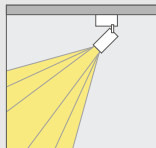


LASER BLADE HORIZONTAL GEARBOX SERIES  
LED TRACK SPOT LIGHT



## Accentuation

Emphasis of objects or architectural elements.



## Track spotlights

narrow to wide beam, Rotateally symmetrical light distribution for accent lighting.

## LED

Wattage:22-50W  
Lumen:1588-3671lm  
Light distribution:  
Narrow  
Medium  
Flood



Suitable for indoor use

IP20

Protection level is IP20



High efficiency Reflector



Comply with CE certification



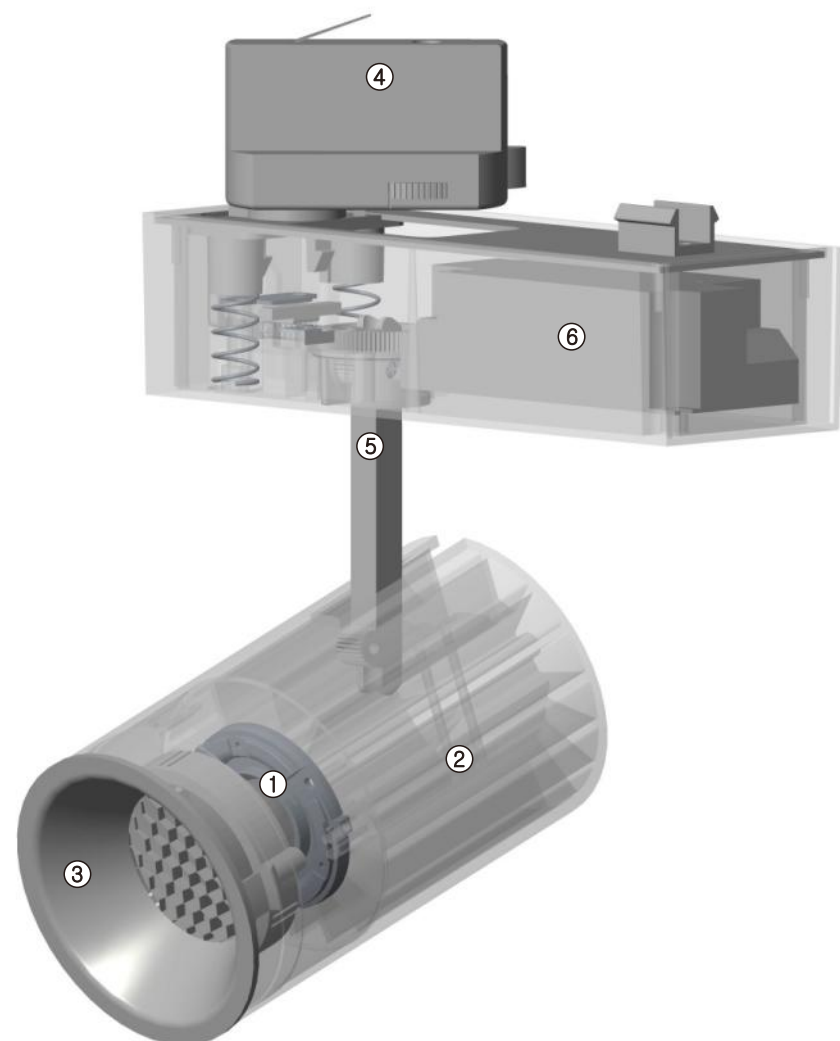
The electrical grade is class1



CRI>80(standard)  
CRI>90(optional)



## LASER BLADE HORIZONTAL GEARBOX SERIES LED TRACK SPOT LIGHT



### 1: LEDS

High-power Leds COB (Chip on board), offering high performance in an easy to use platform. Light colors: Warm White, Neutral White, Cool White .

### 4:Adapter

Providing adapters of 2 phase, 3 phase and 4 phase in order to meet requirements of installation.

### 2: Housing

Made of die-casting aluminum and designed in support of the heat dissipation function. The latest heat dissipation housing, with optimized heat dissipation structure, which facilitate the heat exchange quickly from aluminum alloy die-casting housing to the air.

### 5: Structure design

Housing and driver separated, with better heat dissipation, can effectively extend the lifespan for the light. The fixture security for suspension locker used.

### 3: Reflector system

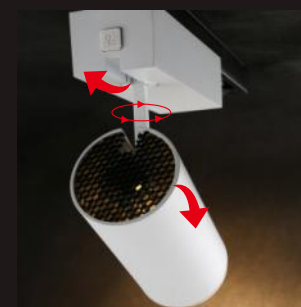
Made of optical polycarbonate, different beam angle options for choose.

### 6: Control gear

Switchable, phase dimmable or DALI dimmable. Phase dimmable version: dimming with external dimmers possible (trailing edge)

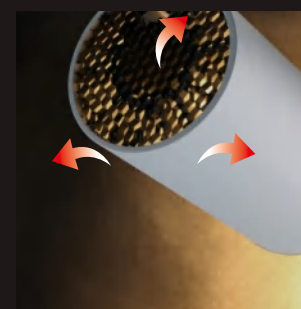


## LASER BLADE HORIZONTAL GEARBOX SERIES LED TRACK SPOT LIGHT



### Angle of adjustment

Smooth mechanical structure that tilt 90° on both side and an swing angle of 355° that has an intergrated ratchets. The ratchets structure improve the rotational smoothness and give an quality feel and sound when it rotates.



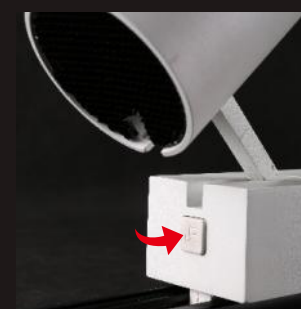
### High efficiency dissipation heat sink

Housing body construction serves as a cooling system designed to dissipate heat faster from the LED, also providing maximum air flow from the entire operation caused by rising hot air. When the operation temperature has been minimized the LED are guarante-ed for it's maximum life time and performance.



### Interchangeable Socket System (ISS)

Simple solderless interchangeable socket system (ISS) that make it possible for quick and easy maintenance of LED/COB modules. The ISS system is compatible with most popular brands COB such like, Philips , Osram , Tridonic , Citizen & CREE. ISS has an special locking that made it possible to add other accessories or secondary optics. Best of all installation are simple and extremely friendly to apply.



### Track lock on switch

The track switch is an smart feature that lock on track and completely hide the track adaptor and driver. The most unique and clean design track spots gearbox on rail available.



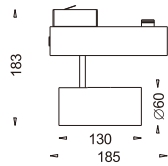
LASER BLADE SMALL HORIZONTAL GEARBOX SERIES  
LED TRACK SPOT LIGHT

60



IP20 | CE | CB |

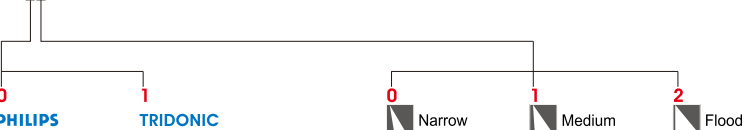
Body: Die-cast aluminium  
Housing: Die-cast aluminium  
Optic: High efficiency Reflector  
Weight: 0.78kg  
CTN: 16PCS



**IO5** INTERCHANGABLE OPTICAL SYSTEM See P.012

White Black Silver

ORDERING CODE	Power (W)	Beam Angle (°)	CCT (K)	Hot Lumen (Lm)	LOR (%)	UGR	On/Off	DRIVER 1-10V	DALI	Triac
LB600-W/B/S-830	22	20	3000	1588	74%	<19	✓	✓	✓	✓
LB600-W/B/S-840			4000	1762						
LB600-W/B/S-850			5000	1862						
LB601-W/B/S-830	22	40	3000	1566	73%	<19	✓	✓	✓	✓
LB601-W/B/S-840			4000	1738						
LB601-W/B/S-850			5000	1797						
LB602-W/B/S-830	22	55	3000	1609	75%	<19	✓	✓	✓	✓
LB602-W/B/S-840			4000	1786						
LB602-W/B/S-850			5000	1846						



Optical accessories See P.012

PHILIPS SLM C 830 1203 L09 G1				3000K			
	h(m)	E(lx)	D(mm)		h(m)	E(lx)	D(mm)
<b>20°</b>	1.0	4036	450	<b>40°</b>	1.0	2720	680
	2.0	1009	900		2.0	680	1360
	3.0	448	1350		3.0	302	2040
	h(m)	E(lx)	D(mm)		h(m)	E(lx)	D(mm)
<b>55°</b>	1.0	1865	760	<b>55°</b>	1.0	1865	760
	2.0	466	1510		2.0	466	1510
	3.0	207	2270		3.0	207	2270



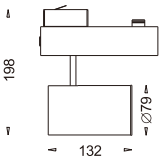
LASER BLADE MEDIUM HORIZONTAL GEARBOX SERIES  
LED TRACK SPOT LIGHT

80



IP20 | CE | CB |

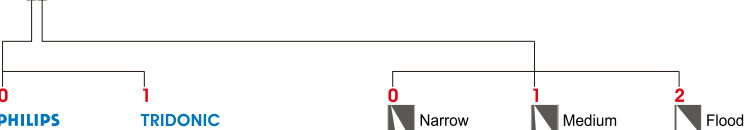
Body: Die-cast aluminium  
Housing: Die-cast aluminium  
Optic: High efficiency Reflector  
Weight: 0.84kg  
CTN: 12PCS



**IO5** INTERCHANGABLE OPTICAL SYSTEM See P.012

White Black Silver

ORDERING CODE	Power (W)	Beam Angle (°)	CCT (K)	Hot Lumen (Lm)	LOR (%)	UGR	On/Off	DRIVER 1-10V	DALI	Triac
LB800-W/B/S-830	32	20	3000	2380	83%	<19	✓	✓	✓	✓
LB800-W/B/S-840			4000	2666						
LB800-W/B/S-850			5000	2719						
LB801-W/B/S-830	32	40	3000	2362	82%	<19	✓	✓	✓	✓
LB801-W/B/S-840			4000	2634						
LB801-W/B/S-850			5000	2687						
LB802-W/B/S-830	32	55	3000	2310	80%	<19	✓	✓	✓	✓
LB802-W/B/S-840			4000	2570						
LB802-W/B/S-850			5000	2621						



Optical accessories See P.012

PHILIPS SLM C 830 1205 L12 G1				3000K			
	h(m)	E(lx)	D(mm)		h(m)	E(lx)	D(mm)
<b>20°</b>	1.0	7065	480	<b>40°</b>	1.0	4936	700
	2.0	1766	950		2.0	1234	1400
	3.0	785	1430		3.0	548	2100
	h(m)	E(lx)	D(mm)		h(m)	E(lx)	D(mm)
<b>55°</b>	1.0	3423	960	<b>55°</b>	1.0	3423	960
	2.0	855	1920		2.0	855	1920
	3.0	380	2880		3.0	380	2880



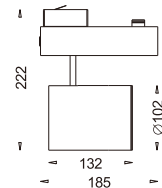
LASER BLADE LARGE HORIZONTAL GEARBOX SERIES  
LED TRACK SPOT LIGHT

100



IP20 | CE | CB |  |  | 

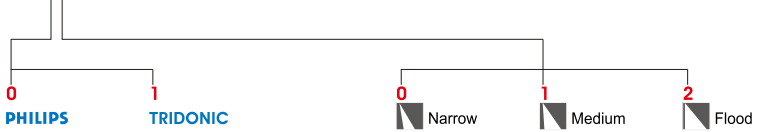
Body: Die-cast aluminium  
Housing: Die-cast aluminium  
Optic: High efficiency Reflector  
Weight: 1.0kg  
CTN: 12PCS



**IO5** INTERCHANGEABLE OPTICAL SYSTEM See P.012

 White  Black  Silver

ORDERING CODE	Power (W)	Beam Angle (°)	CCT (K)	Hot Lumen (lm)	LOR (%)	UGR	On/Off	DRIVER 1-10V	DALI	Triac
LB1000-W/B/S-830	50	20	3000	3671	77%	<19	✓	✓	✓	✓
LB1000-W/B/S-840			4000	4059						
LB1000-W/B/S-850			5000	4077						
LB1001-W/B/S-830	50	40	3000	3613	75%	<19	✓	✓	✓	✓
LB1001-W/B/S-840			4000	3954						
LB1001-W/B/S-850			5000	3972						
LB1002-W/B/S-830	50	55	3000	3703	77%	<19	✓	✓	✓	✓
LB1002-W/B/S-840			4000	4050						
LB1002-W/B/S-850			5000	4070						



Optical accessories See P.012

PHILIPS SLM C 830 1208 L14 G1 3000K

h(m)	E(lx)	D(mm)	h(m)	E(lx)	D(mm)	h(m)	E(lx)	D(mm)
1.0	11776	410	1.0	7156	680	1.0	4966	1060
2.0	2944	810	2.0	1789	1360	2.0	1241	2110
3.0	1308	1220	3.0	795	2040	3.0	551	3170

